

Stretford High School



Home Learning Policy

2022-2024

Ratified by the T & L Committee Governors	December 2022
Review Date	December 2024

Contents	Page
<i>The impact of home learning</i>	3
<i>The purpose of home learning</i>	3
<i>The frequency of home learning</i>	4
<i>Home learning setting & submission</i>	4
<i>Supporting students with home learning</i>	4
<i>Expectations of students</i>	5
<i>Rewards & sanctions</i>	5
<i>Self-regulation & Home learning</i>	6
<i>Marking & feedback</i>	6
<i>Monitoring & evaluation of home learning</i>	6
Appendix 1 – Home learning sanctions flow diagram	7
Appendix 2 – Home learning incident summary table	8
	9

The impact of home learning

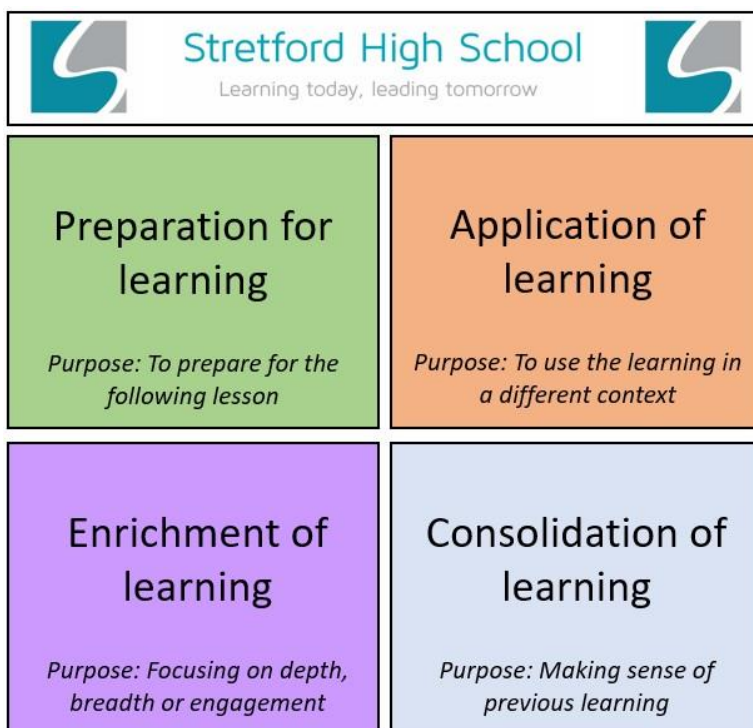
At Stretford High School, we believe that home learning (H/L) is a vital part of our students' learning journey. Home learning allows students to prepare for, consolidate, apply or enrich their learning. In addition, home learning plays a crucial role in supporting students on their journey to independence and the ability to self-regulate their own learning, we are growing metacognitive learners.

This view is informed by research:

- The education endowment foundation found that home learning leads to an average of 5 months' additional progress for secondary school students.
- Home learning has a greater impact on secondary students.
- The education endowment foundation found that home learning is more effective when students know its purpose (*see below for how we have implemented this*).
- Research shows that our brains have a 'forgetting curve'. This means that we quickly forget new learning if it is not revisited. Home learning is an excellent opportunity for students to re-visit knowledge ensuring that this knowledge is retained.

The purpose of home learning

Home learning is set with a clear purpose and will fall into one of our four home learning themes.



Home learning will be set using this terminology. This shared language allows a clarity of intent when discussing and setting home learning tasks.

The frequency of home learning

Year group	At least once per week	Once per week	Project – Every half term	Time to be allocated per piece of H/L. Up to:
7	English, Maths & Science	Languages, RE, History, Geography & PE	PEXA, EE, Vocational & Computing	30 minutes
8				40 minutes
9				50 minutes
10		Options	N/A	60 minutes
11				

Home learning setting and submission

All home learning is set via the Arbor platform. You can find more information about Arbor on our website - <https://stretfordhigh.com/information/home-learning/> Home learning is set as an assignment with the theme of the H/L clearly identified. Parents / carers can sign up for guardian reports which provide a weekly update from Arbor.

The instructions will make it clear how H/L should be handed in (electronically on Arbor, on a subject specific website or hard copy). Whichever method of completion, students must click 'submit' or 'mark as done' even when the work does not require a document being submitted on Arbor.

Supporting students with home learning

The School will:

- Provide access to computers as part of home learning club
- Ensure instructions are clear and students know how to be successful in their H/L
- Allow a reasonable time for the completion of H/L tasks
- Give rewards and impose sanctions in line with school policy
- Contact parents / carers if students are not completing their H/L

Parents can support their child by:

- Helping them set a routine for the completion of home learning
- Discussing home learning regularly with their child
- Signing up for guardian reports from Arbor
- Ensuring that students catch up on missed home learning should they be made aware that a piece of work has not been completed on time.
- Contact the school should there be any difficulties
- Looking at student's home learning and discussing this with them

Expectations of students

Students will:

- Check Arbor every day
- Complete H/L with sufficient time to ask the teacher for help if needed
- Complete all H/L to a high standard
- Hand in all H/L on time
- Click 'submit' or 'mark as done' on Arbor even if the assignment does not require the work to be handed in via Arbor directly.

Rewards and consequences

Rewards

- Students will receive e-praise points for good work
- Positive text messages / Arbor messages / emails / postcards home
- Exemplar home learning will be shared with the class
- Academic schools weekly award
- Certificates home

Consequences

1. If a student does not complete H/L by the expected date the teacher will record this as 'Late Home learning' on Arbor by 15:00 on the day the H/L is missing. This will trigger an automatic text home. Students are expected to complete and hand this work in by the following lesson.
2. If the student does not hand in the H/L during the next lesson, the teacher will issue a detention and phone home to discuss concerns. This will be logged as 'home learning not completed' on ARBOR.
3. If the student does not attend the H/L detention, the class teacher will refer this matter to their head of department. The head of department will issue a head of department H/L detention and phone home to discuss concerns.
4. If the student does not attend the head of department H/L detention, then the head of department and class teacher will hold a parent/teacher meeting to discuss concerns and barriers to completion. The Head of department (HoD) will call home to arrange the meeting and send a letter. This will be logged as 'home learning meeting' on Arbor. The HoD will share minutes from this meeting with all relevant parties and add them to Arbor under linked documents. The head of department will monitor and support as required.
5. If home learning continues to be an issue after the parent/teacher meeting, the head of department will refer the matter to their senior leadership link.

Class teachers will monitor H/L completion and 3 incidents (see appendix2) in a half term will result in a parent/teacher meeting.

See appendix 1 for consequences flow diagram

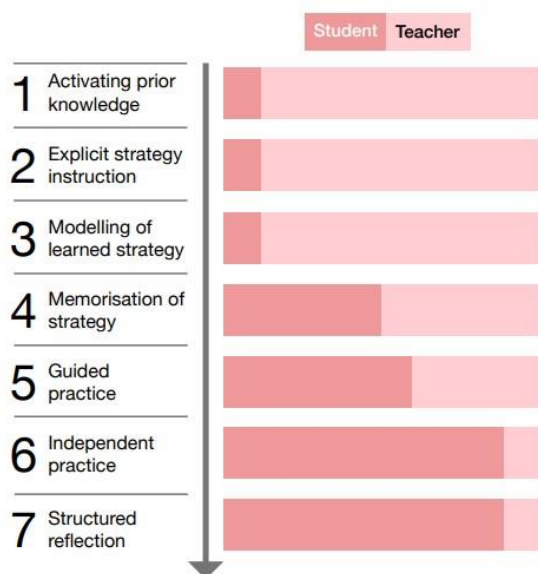
See appendix 2 for H/L incidents summary table

Self-regulation and home learning

At Stretford High School we want our students to become self-regulated learners. Self-regulation is the ability to manage our own behaviour and aspects of our learning.

The education endowment foundation found that self-regulation is a key factor in students' success and can lead to an additional seven months progress per year.

Home learning can build steps 4,6 and 7 of the key steps to building self-regulated learners identified by the EEF.



(Image: [EEF report](#))

Home learning is a rich opportunity to improve students' self-regulation. We aim to support students to build these habits by setting some home learning tasks without specific direction from their teacher. These tasks, known as 'independent learning time', require students to reflect on their own knowledge / skills, identify areas for development and use learnt strategies to develop their understanding of these areas.

Marking & Feedback

Home learning will be checked and marked using a variety of methods including marking for completion, effort/quality and verbal feedback. Marking will be in line with the school marking and feedback policy.

Monitoring & evaluation of home learning

In order to ensure that our home learning is effective and impactful, Stretford High School will conduct regular review cycles.

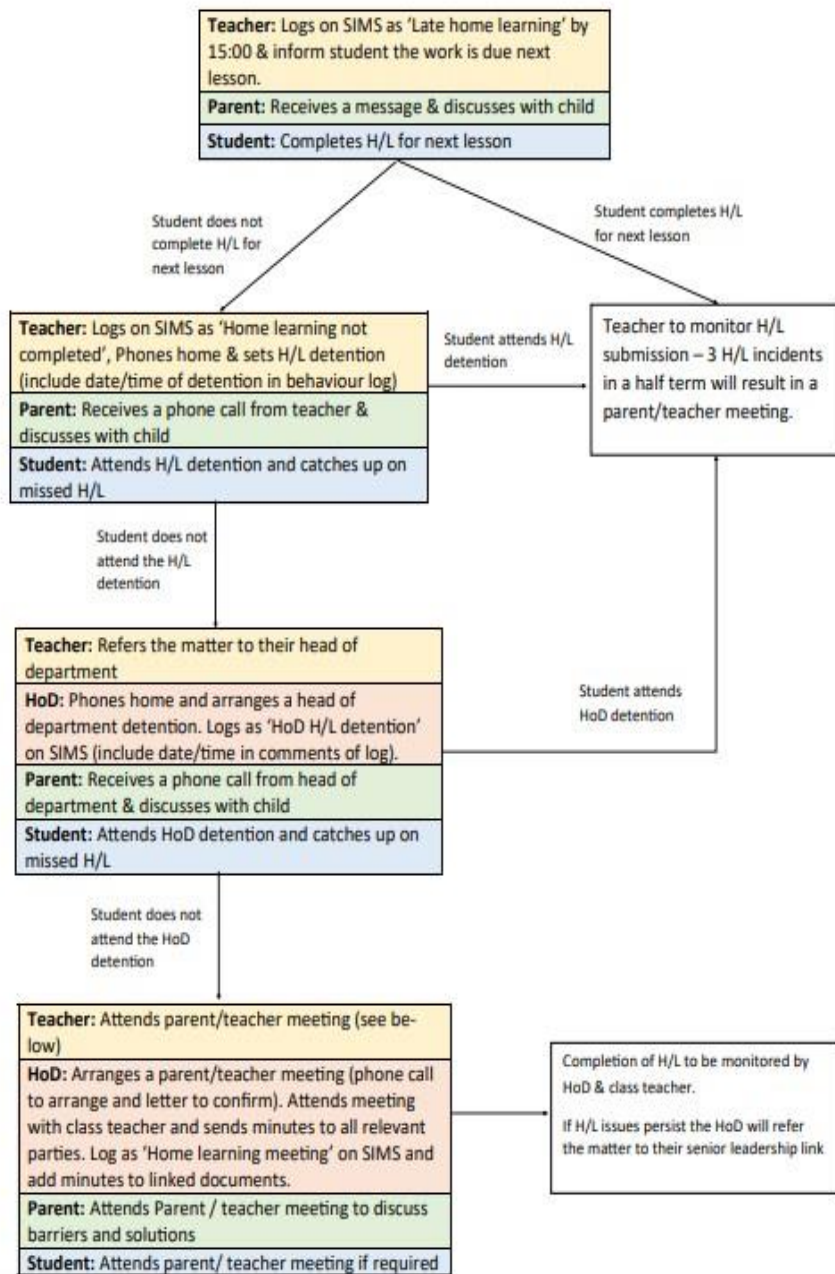
A review cycle will consist of:

- Student voice
- Parent / carer voice
- Analysis of H/L statistics (number of assignments set & completion rate)
- Sample of H/L to ensure quality
- Report to department on outcomes and next steps

Appendix 1 – Home learning consequences flow diagram

Home Learning Consequences flow diagram.

When a student does not hand in H/L on by the deadline the following process will apply



Note: Each step is a new log on sims not an amendment of the original log.

Appendix 2 – H/L incidents summary table

All home learning incidents will be logged on Arbor.

Name of H/L incident	Definition
Late Home learning	The student missed the deadline for completion, they must complete the work for next lesson.
Home learning not completed	The student did not hand in the H/L after their second chance & now has a detention – The date / time of the detention should be added in the comments of the behaviour log.
HoD Home learning detention	The student failed to attend their H/L detention. They now have a head of department detention – The date / time of the detention should be added in the comments of the behaviour log.
Home learning meeting	The student failed to attend the head of department detention or has had 3 incidents for H/L in a half term. A parent / teacher meeting has taken place. Meeting minutes should be added to linked documents.